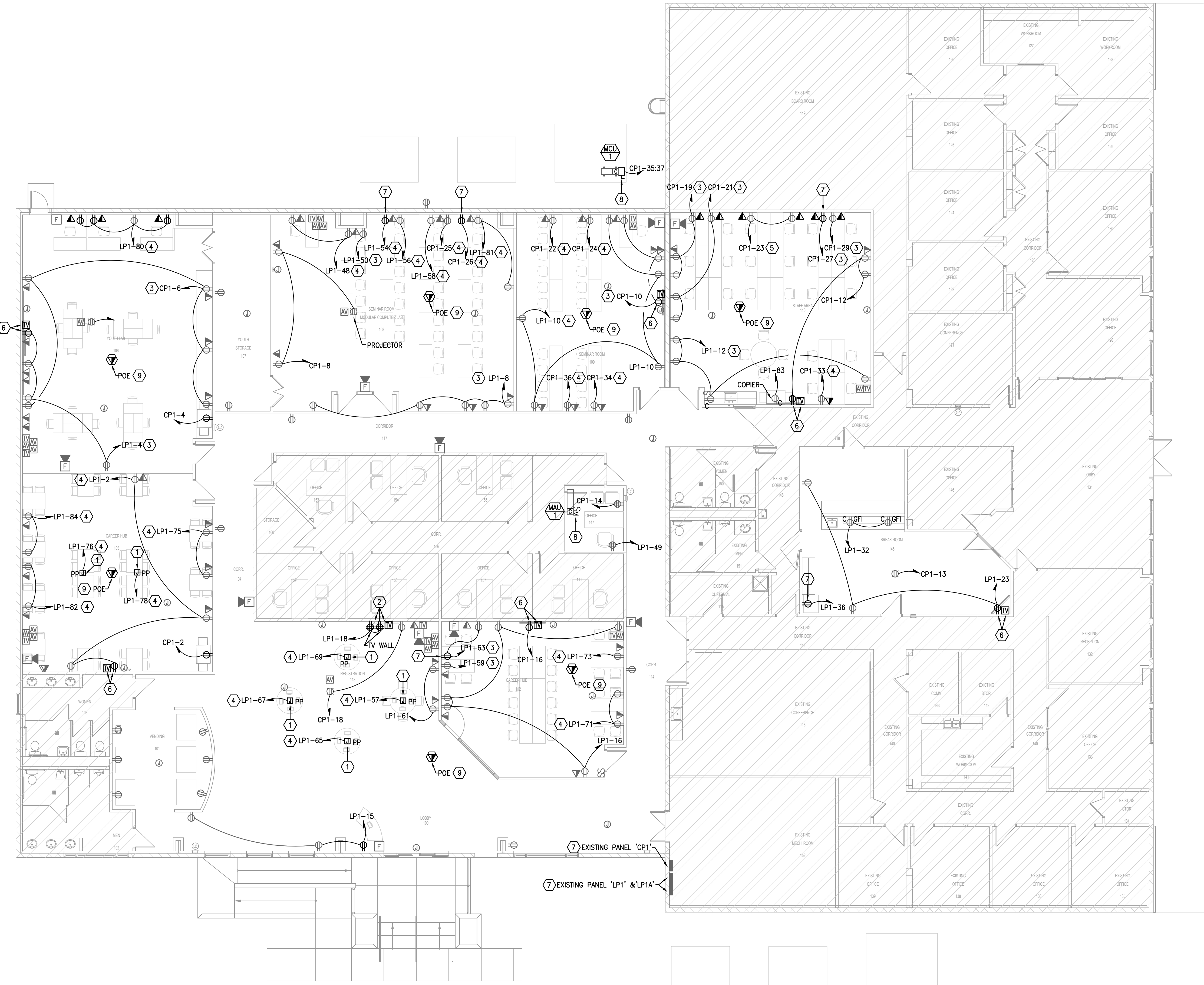


GENERAL NOTES:

- DO NOT SCALE ELECTRICAL DRAWING FOR ANY DIMENSIONS.
- ALL WORK SHALL COMPLY WITH THE 2014 NATIONAL ELECTRIC CODE, NATIONAL, STATE AND LOCAL CODES. PROVIDE GROUNDING AND BONDING PER NEC 250.
- SEE SINGLE LINE DIAGRAM FOR FEEDER WIRE AND CONDUIT SIZE. ALL CIRCUITS NOT SIZED ON DRAWING SHALL BE INSTALLED TO MEET MINIMUM SIZE REQUIRED BY NEC. ALL CONDUCTORS SHALL HAVE AN EQUIPMENT GROUND WIRE SIZED PER NEC.
- FIELD VERIFY EXACT LOCATION OF ALL DEVICES AND EQUIPMENT PRIOR TO ROUGH IN.

REFERENCE NOTES: (X)

- PROVIDE POWER POLE WITH FLEXIBLE CONNECTION TO LOCAL FURNITURE FOR FURNITURE POWER. COORDINATE POWER POLE LOCATION AND CONNECTION TO FURNITURE WITH FURNITURE INSTALLER PRIOR TO ROUGH-IN. PROVIDE POWER POLE AND CONDUIT SIZED AS REQUIRED BY NEC FOR CIRCUITS SHOWN ON PLANS. ALL MULTIWIRE WORK STATIONS SHALL BE ON BREAKERS PROVIDED WITH MEANS TO DISCONNECT ALL UNDERGROUND CONDUCTORS SIMULTANEOUSLY PER NEC ARTICLE 605.7.
- PROVIDE (2) 120V QUADRIplex RECEPTACLES AND TELEVISION OUTLET FOR T.V. WALL. COORDINATE LOCATION, MOUNTING HEIGHT, AND CONNECTION REQUIREMENTS WITH OWNER & EQUIPMENT INSTALLER PRIOR TO ROUGH IN.
- RECEPTACLE CIRCUIT FOR COMPUTERS. NO MORE THAN 3 COMPUTERS AT 2.5A PER COMPUTER ALLOWED ON THIS CIRCUIT. ELECTRICAL CONTRACTOR TO FIELD VERIFY CIRCUITRY PRIOR TO ROUGH-IN.
- RECEPTACLE CIRCUIT FOR COMPUTERS. NO MORE THAN 4 COMPUTERS AT 2.5A PER COMPUTER ALLOWED ON THIS CIRCUIT. ELECTRICAL CONTRACTOR TO FIELD VERIFY CIRCUITRY PRIOR TO ROUGH-IN.
- RECEPTACLE CIRCUIT FOR COMPUTERS. NO MORE THAN 5 COMPUTERS AT 2.5A PER COMPUTER ALLOWED ON THIS CIRCUIT. ELECTRICAL CONTRACTOR TO FIELD VERIFY CIRCUITRY PRIOR TO ROUGH-IN.
- PROVIDE 120V DUPLEX RECEPTACLE AND TELEVISION OUTLET FOR WALL MOUNTED TELEVISION. COORDINATE LOCATION AND MOUNTING HEIGHT WITH OWNER/EQUIPMENT INSTALLER PRIOR TO ROUGH-IN.
- NEW DUPLEX RECEPTACLE, CONNECT TO CIRCUIT INDICATED.
- ELECTRICAL CONTRACTOR SHALL COORDINATE DISCONNECT AND FUSE REQUIREMENTS FOR MECHANICAL UNIT WITH MECHANICAL CONTRACTOR AND EQUIPMENT MANUFACTURER PRIOR TO ROUGH-IN AND PROVIDE AS REQUIRED.
- PROVIDE CEILING MOUNTED DATA PORT FOR POE DEVICE. COORDINATE EXACT LOCATION OF POE DEVICE WITH OWNER/IT PRIOR TO ROUGH-IN.



**Career Source Central Florida
Lake County Career Center**
Leesburg, Florida

PERMIT SET **2017.046**

08-31-2018 issue date SMB/MJR drawn by AJB/BLS approved by project number

REVISION SCHEDULE	
DATE	DESCRIPTION

**FLOOR PLAN
POWER & SYSTEMS** **E2.1**
sheet number

THESE DOCUMENTS AND THEIR CONTENTS ARE THE PROPERTY OF BHM ARCHITECTURE, INC. AND ARE ISSUED ONLY FOR THE SPECIFIC PROJECT NOTED ON THESE DRAWINGS. ANY REPRODUCTION AND/OR REDISTRIBUTION WITHOUT THE EXPRESSED WRITTEN CONSENT OF BHM ARCHITECTURE, INC. IS PROHIBITED BY LAW. TO THE BEST OF THE ARCHITECT'S KNOWLEDGE, THESE PLANS AND SPECIFICATIONS COMPLY WITH THE APPLICABLE MINIMUM BUILDING CODES AND THE APPLICABLE FIRE SAFETY STANDARDS.



Joseph Lawrence & Co
Consulting Engineers

180 HAZWOOD AVE, SUITE 3000
ALTIMONTE SPRINGS, FLORIDA 32714
TEL: 321.974.4444
WWW.JL&C.COM
CA NO. 28739



bhm
architecture

BHM ARCHITECTURE, INC.
MAIL ONLY: 478 E ALTIMONTE DR.,
SUITE 108 PMB 264
ALTIMONTE SPRINGS, FL 32701-4622
PHONE: 407.333.2005 LICENSE # AAC000233

JLC 18.0142.00

Blake Lawrence Suddeth
P.E. # 69060

1 FLOOR PLAN - POWER & SYSTEMS
Scale: 1/8" = 1'-0"

